

ADOPT-A-PAINTING

Adopt a work from the Figge's second major exhibition,

For America: 200 Years of Painting from the National Academy of Design.

Your sponsorship will be recognized with the work throughout the exhibition.

Three levels of sponsorship are available, ranging from \$250-\$750.

(sponsorship level determined by artwork)

For America: 200 Years of Paintings from the National Academy of Design is organized by the American Federation of Arts and the National Academy of Design, New York.

Support for the national tour is provided by the JFM Foundation, Monique Schoen Warshaw, and Steph & Jody La Nasa.

All images courtesy of the American Federation of the Arts unless otherwise noted



Adoption Tiers

Tier 1 - \$750 | Tier 2 - \$500 | Tier 3 - \$250

Listed next to each piece

Contact Tessa Pozzi at 563.345.6638 or
tpozzi@figgeartmuseum.org to purchase.

*Adoption recognition will be listed on a label next to the work during the exhibition's run at the Figge Art Museum. **Recognition lines are 35 characters max.** Adopters will receive an adoption certificate.*

Founding an American School



Adopted

Tier 3 - Samuel F. B. Morse

Self-Portrait, ca. 1809

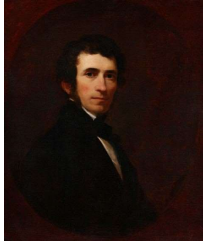
Watercolor on ivory, 3 1/4 x 2 5/8 in.

National Academy of Design, New York, Gift of Samuel P. Avery, John

G. Brown, Thomas B. Clarke, Lockwood de Forest, Daniel Huntington,

James C. Nicoll, and Harry W. Watrous, 1900, 894-P

Presentation at the Figge Supported by
Ron and Connie Koehn



Tier 3 - Asher B. Durand

Self-Portrait, ca. 1835

Oil on canvas, 30 1/8 x 25 1/4 in.

National Academy of Design, New York, Gift of the artist, 384-P

Adopted

Tier 2 - Asher B. Durand

Landscape, 1850

Oil on canvas, 27 1/4 x 38 1/2 in.

National Academy of Design, New York, Bequest of James A. Suydam,

1865, 386-P



Adopted

Tier 2 - Frederic Edwin Church

Scene among the Andes, 1854

Oil on canvas, 15 7/8 x 24 in.

National Academy of Design, New York, Bequest of James A. Suydam,

1865, 233-P

Presentation at the Figge Supported by
Whitey's Ice Cream



Adopted

Tier 3 - John Frederick Kensett

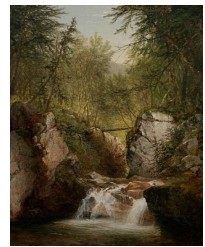
The Bash-Bish, 1855

Oil on canvas, 36 1/8 x 29 in.

National Academy of Design, New York, Bequest of James A. Suydam,

1865, 700-P

Presentation at the Figge Supported by
Nancy Bach and Gwen Hudson

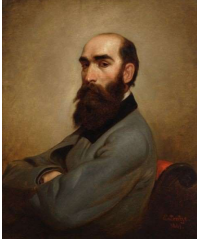


Tier 2 - Albert Bierstadt

On the Sweetwater near the Devil's Gate, 1860

Oil on millboard, 12 1/4 x 18 in.

National Academy of Design, New York, 90-P



Tier 3 - Emanuel Leutze
Worthington Whittredge, 1861
Oil on canvas, 30 x 24 5/8 in.
National Academy of Design, New York, 767-



Tier 1 - Emanuel Leutze
George Washington, Study for "Washington Crossing the Delaware", ca. 1850
Oil on canvas, 21 x 17 in.
National Academy of Design, New York, 766-P



Tier 3 - Ferdinand Thomas Lee Boyle
Eliza Greathouse, 1869
Oil on canvas, 30 x 25 1/4 in.
National Academy of Design, New York, 145-P



Tier 3 - Edward Harrison May
Frederic Edwin Church, n.d.
Oil on canvas, 19 7/8 x 15 7/8 in.
National Academy of Design, New York, 841-P

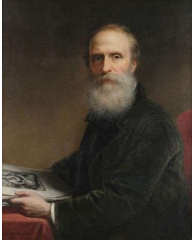


Tier 3 - George Henry Hall
A Dead Rabbit, 1858
Oil on canvas, 43 1/4 x 24 in.
National Academy of Design, New York, 530-P

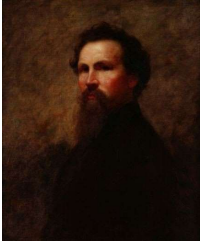


Adopted
Tier 3 - Daniel Huntington
The Fair Student [or] Girl Reading, 1858
Oil on canvas, 30 x 25 in.
National Academy of Design, New York, Bequest of James A. Suydam, 1865, 604-P

Presentation at the Figge Supported by
Susan Perry and Stan Goodyear



Tier 3 - Daniel Huntington
Self-Portrait, 1891
Oil on canvas, 36 1/8 x 29 in.
National Academy of Design, 602-P



Tier 3 - Eastman Johnson
Self-Portrait, ca. 1859-1860
Oil on canvas, 30 3/8 x 25 in.
National Academy of Design, New York, 669-P



Tier 2 - Eastman Johnson
Negro Boy, ca. 1860-1861
Oil on canvas, 14 x 17 in.
National Academy of Design, New York, 671-P



Tier 3 - Oliver Ingraham Lay
Winslow Homer, 1865
Oil on canvas, 20 1/8 x 16 1/8 in.
National Academy of Design, New York, 750-P



Tier 1 - Winslow Homer
Croquet Player, ca. 1865
Oil on canvas, 8 1/8 x 12 1/8 in.
National Academy of Design, New York, 590-P



Tier 3 - Elihu Vedder
Jane Jackson, 1865
Oil on canvas, 18 x 18 in.
National Academy of Design, New York, 1345-P

A New Internationalism



Tier 2 - Wyatt Eaton

The Artist in His Studio, 1873

Oil on canvas, 24 1/8 x 19 3/4 in.

National Academy of Design, New York, Gift of John Elderkin, 1902, 406-P



Tier 1 - William J. Whittmore

Charles Courtney Curran, 1888-1889

Oil on canvas, 17 x 21 in.

National Academy of Design, New York, 1413-P



Tier 1 - William Merritt Chase

The Young Orphan [or] An Idle Moment [or] Portrait, 1884

Oil on canvas, 44 x 42 in.

National Academy of Design, New York, 221-P



Tier 2 - William Merritt Chase

Robert Blum, 1888

Oil on canvas, 21 1/8 x 17 1/8 in.

National Academy of Design, New York, 228-P

Adopted



Tier 1 - Robert Frederick Blum

Two Idlers, 1888-1889

Oil on canvas, 29 x 40 in.

National Academy of Design, New York, 108-P



Tier 1 - John Singer Sargent

Claude Monet, ca. 1887

Oil on canvas, 16 x 13 in.

National Academy of Design, New York, 1123-P



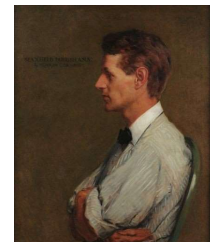
Tier 2 - John Singer Sargent
Self-Portrait, 1892
 Oil on canvas, 21 x 17 in.
 National Academy of Design, New York, 1122-P



Tier 2 - Cecilia Beaux
Self-Portrait, 1894
 Oil on canvas, 25 x 20 in.
 National Academy of Design, New York, 67-P



Tier 3 - Kenyon Cox
A Blonde, 1891
 Oil on canvas, 41 x 36 in.
 National Academy of Design, New York, 283-P



Tier 2 - Kenyon Cox
Maxfield Parrish, 1905
 Oil on canvas, 30 x 25 in.
 National Academy of Design, New York, 293-P



Tier 1 - Maxfield Parrish
Saint Valentine, 1904
 Tempera on gessoed panel, 20 x 15 3/4 in.
 National Academy of Design, New York, 976-P



Tier 2 - Thomas Eakins
Self-Portrait, 1902
 Oil on canvas, 30 x 25 in.
 National Academy of Design, New York, 398-P

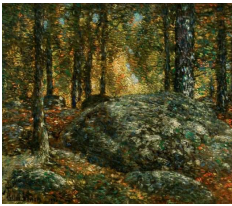


Tier 3 - Robert Reid
Self-Portrait, 1904
Oil on canvas, 27 1/2 x 24 5/8 in.
National Academy of Design, New York, 1053-P



Adopted
Tier 2 - Robert Reid
Daffodils, n.d.
Oil on canvas, 42 x 44 in.
National Academy of Design, New York, 1054-P

Presentation at the Figge Supported
In Memory of Rebecca Carnow Jones

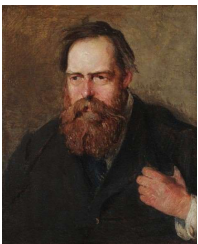


Adopted
Tier 3 - Childe Hassam
The Jewel Box, Old Lyme, 1906
Oil on canvas, 20 x 24 in.
National Academy of Design, New York, 548-P

Presentation at the Figge Supported by
Anonymous



Adopted
Tier 2 - Frederick Carl Frieseke
Hollyhocks, by 1911
Oil on canvas, 25 1/2 x 32 in.
National Academy of Design, New York, 479-P



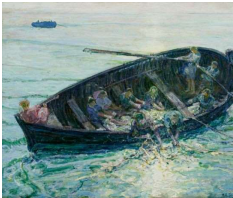
Tier 3 - J. Alden Weir
Albert Pinkham Ryder, 1902-1903
Oil on canvas, 24 x 20 in.
National Academy of Design, New York, 1395-P



Tier 3 - Albert Pinkham Ryder
Marine, 1907
Oil on wood panel, 8 5/8 x 17 3/4 in.
National Academy of Design, New York, 1111-P



Tier 2 - Richard E. Miller
Henry Ossawa Tanner, n.d.
Oil on canvas, 30 x 25 in.
National Academy of Design, New York, 872-P



Tier 1 - Henry Ossawa Tanner
The Miraculous Haul of Fishes, ca. 1913-1914
Oil on canvas, 38 x 47 1/2 in.
National Academy of Design, New York, 1236-P

Painting America



Tier 3 - Robert Henri
George Wesley Bellows, 1911
Oil on canvas, 32 x 25 7/8 in.
National Academy of Design, New York, 561-P



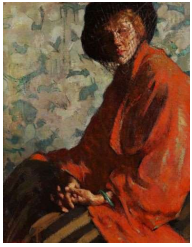
Tier 3 - Daniel Garber
Self-Portrait, ca. 1911
Oil on canvas, 30 x 25 1/4 in.
National Academy of Design, New York, 484-P
© Estate of Daniel Garber



Tier 3 - Daniel Garber
By Addingham, 1911
Oil on canvas, 25 1/4 x 30 1/8 in.
National Academy of Design, New York, 485-P
© Estate of Daniel Garber



Tier 2 - Gertrude Fiske
Self-Portrait, 1922
Oil on canvas, 30 1/2 x 25 1/4 in.
National Academy of Design, New York, 438-P
© Estate of Gertrude Fiske



Adopted

Tier 1 - Gertrude Fiske

Jade, ca. 1918

Oil on canvas, 29 3/4 x 23 3/4 in.

National Academy of Design, New York, 439-P

© Estate of Gertrude Fiske



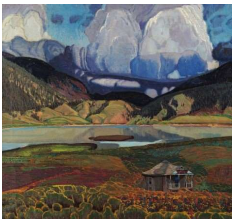
Tier 2 - Mary Shepard Greene Blumenschein

Self-Portrait, 1915

Oil on canvas, 30 x 25 in.

National Academy of Design, New York, 113-P

© Estate of Mary Shepard Greene Blumenschein



Tier 1 - Ernest L. Blumenschein

The Lake, ca. 1923

Oil on canvas, 24 1/8 x 27 in.

National Academy of Design, New York, 112-P

© Estate of Ernest L. Blumenschein



Tier 2 - Walter Ufer

Self-Portrait, n.d.

Oil on canvas, 30 1/4 x 25 in.

National Academy of Design, New York, 1271-P



Tier 1 - Walter Ufer

Jim, 1918

Oil on canvas, 40 1/8 x 36 1/4 in.

National Academy of Design, New York, 1272-P



Tier 3 - Ellen Emmet Rand

Self-Portrait, 1927

Oil on composition board, 30 x 24 in.

National Academy of Design, New York, 1042-P



Adopted

Tier 1 - Guy C. Wiggins

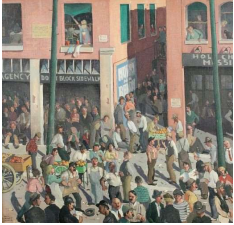
Manhattan, 1929

Oil on canvas, 30 x 60 in.

National Academy of Design, New York, 1418-P

© Estate of Guy C. Wiggins

Presentation at the Figge Supported
In Memory of Ellis Island Emigrants



Adopted

Tier 2 - Paul Sample

Unemployment, 1931

Oil on canvas, 36 x 40 in.

National Academy of Design, New York, 1121-P

© Estate of Paul Sample

Presentation at the Figge Supported by
Marianne Jensen



Tier 3 - Paul Sample

Self-Portrait, 1937

Oil on canvas, 30 x 25 in.

National Academy of Design, New York, 11979-P

© Estate of Paul Sample



Tier 3 - Isabel Bishop

Nude Study, 1934

Oil on canvas, 15 x 18 in.

National Academy of Design, New York, 91-P

© Estate of Isabel Bishop



Adopted

Tier 3 - Peter Hurd

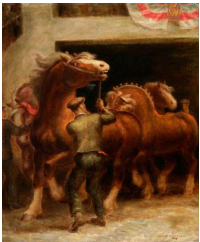
Evening in the Sierras, 1938-1939

Egg tempera on gessoed panel, 24 1/4 x 42 in.

National Academy of Design, New York, 615-P

© Estate of Peter Hurd

Presentation at the Figge Supported by
Carol Sommer



Adopted

Tier 1 - John Steuart Curry

Belgian Stallions, 1938

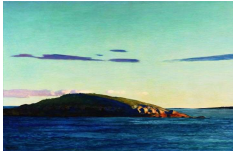
Oil on wood panel, 30 x 25 1/2 in.

National Academy of Design, New York, 317-P

Presentation at the Figge Supported by
John and Nancy Danico



Tier 2 - N. C. Wyeth
Self-Portrait, 1940
 Egg tempera on gessoed panel, 32 3/4 x 27 1/2 in.
 National Academy of Design, New York, 1463-P



Tier 1 - N. C. Wyeth
Blubber Island, Maine, 1938
 Oil on gessoed panel, 25 x 40 in.
 National Academy of Design, New York, 1464-P



Tier 2 - Reginald Marsh
Barrel of Fun, 1943
 Oil on composition board, 24 x 29 3/4 in.
 National Academy of Design, New York, 824-P
 © Estate of Reginald Marsh/Art Students League, New York

Postwar Realisms



Tier 3 - Aaron Bohrod
Artist in Residence: Self-Portrait, 1943
 Oil on canvas, 26 x 21 1/8 in.
 National Academy of Design, New York, 121-P
 © Estate of Aaron Bohrod



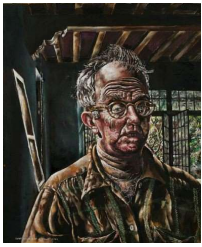
Tier 3 - Aaron Bohrod
Façade, New Orleans, n.d.
 Oil on canvas, 16 x 19 3/4 in.
 National Academy of Design, New York, 1537-P
 © Estate of Aaron Bohrod

Adopted



Tier 1 - Andrew Wyeth
Self-Portrait, 1945
 Oil and egg tempera on gessoed panel, 25 x 30 in.
 National Academy of Design, New York, 1462-P
 © Andrew Wyeth

Presentation at the Figge Supported by
 the Figge 15 Birthday Club



Tier 3 - Ivan Albright
Self-Portrait, 1948
Oil on canvas, 24 x 20 in.
National Academy of Design, New York, 18-P
© Estate of Ivan Le Lorrain Albright



Tier 3 - Jules Kirschenbaum
Dark in the Forest, 1951-1952
Oil on canvas, 36 x 29 3/4 in.
National Academy of Design, New York, 1681-P
© Estate of Jules Kirschenbaum

Adopted



Tier 3 - Philip Pearlstein
Nude Torso, 1963
Oil on canvas, 36 x 44 in.
National Academy of Design, New York, 1987.7
© Philip Pearlstein
Courtesy Betty Cuninghame Gallery, New York, NY

Presentation at the Figge Supported by
George and Rachel K. Strader



Tier 3 - Lois Dodd
Self-Portrait, 1984
Oil on composition board, 20 x 12 in.
National Academy of Design, New York, 1988.2
© Lois Dodd

Adopted



Tier 3 - Jane Freilicher
Telephone Poles, 1963
Oil on canvas, 32 x 40 1/2 in.
National Academy of Design, New York, 1982.2551
© Estate of Jane Freilicher

Presentation at the Figge Supported by
Hedy and Michael Hustedde



Tier 3 - Hughie Lee-Smith
Self-Portrait, 1964
Oil on canvas, 24 x 20 in.
National Academy of Design, New York, 1670-P
© Estate of Hughie Lee-Smith

Adopted



Adopted

Tier 2 - Hughie Lee-Smith
The Bridge, before 1968
 Oil on canvas, 25 7/8 x 36 in.
 National Academy of Design, New York, 1688-P
 © Estate of Hughie Lee-Smith

Presentation at the Figge Supported
 In Loving Memory Of Scott Holgorsen



Tier 3 - George Tooker
Self-Portrait, 1969
 Egg tempera on gessoed panel, 24 x 19 1/2 in.
 National Academy of Design, New York, 1706-P
 © Estate of George Tooker



Tier 3 - George Tooker
Voice II, 1972
 Egg tempera on gessoed panel, 17 1/2 x 11 1/2 in.
 National Academy of Design, New York, 1758-P
 © Estate of George Tooker



Tier 1 - Richard Estes
NYC Parking Lot, 1969
 Oil on Masonite, 23 3/4 x 36 in.
 National Academy of Design, New York, 1987.5
 © Richard Estes



Tier 3 - Lois Dodd
View through Chicken House, 1971
 Oil on Masonite, 28 1/8 x 20 1/8 x 1 1/8 in.
 National Academy of Design, New York, Gift of Lois Dodd, 2004, 2004.1
 © Lois Dodd



Adopted

Tier 1 - May Stevens
Benny Andrews, the Artist, and Big Daddy Paper Doll, 1976
 Acrylic on canvas, 60 1/8 x 60 1/4 x 1 5/8 in.
 National Academy of Design, New York, 2004.16
 © Estate of May Stevens

Presentation at the Figge Supported by
 Celebrating Black Artists: T Felden



Adopted

Tier 3 - Charles White

Matriarch, 1967

Oil on canvas, 20 x 17 in.

National Academy of Design, New York, 1765-P

© The Charles White Archives

Presentation at the Figge Supported in
Honor of Rebecca Christoffel



Adopted

Tier 2 - Charles White

Mother Courage II, 1974

Oil on canvas, 49 3/4 x 39 7/8 in.

National Academy of Design, New York, 1779-P

© The Charles White Archives

Presentation at the Figge Supported by
Marianne Jensen



Tier 1 - Will Barnet

Self-Portrait, 1981

Oil on canvas, 31 1/8 x 45 1/2 in.

National Academy of Design, New York, 1981.630

© Will Barnet Trust



Tier 1 - Wayne Thiebaud

Tennis Player (Self-Portrait), 1985

Oil on plywood panel, 12 x 11 5/8 in.

National Academy of Design, New York, 1986.216

© Wayne Thiebaud

For America



Tier 3 - Rosemarie Beck

Self-Portrait, 1975

Oil on linen, 60 x 50 in.

National Academy of Design, New York, 1981.1

© The Rosemarie Beck Foundation, Image courtesy of
The Rosemarie Beck Foundation



Tier 2 - Rosemarie Beck

The Tempest: Prospero, Miranda, Ferdinand, 1976

Oil on linen, 49 1/2 x 60 in.

National Academy of Design, New York, 1982.2547

© The Rosemarie Beck Foundation, Image courtesy of
The Rosemarie Beck Foundation



Adopted

Tier 3 - Paul Resika

The End of the Hurricane, 1979

Oil on canvas, 24 x 29 in.

National Academy of Design, New York, 1980.17

© Paul Resika



Adopted

Tier 3 - Gretna Campbell

Garden in Brazil, 1983

Oil on canvas, 54 x 58 in.

National Academy of Design, New York, 1987.42

© Estate of Gretna Campbell



Tier 3 - William Clutz

Self-Portrait (Walking), 1980

Oil on canvas, 35 1/8 x 30 1/4 in.

National Academy of Design, New York, 2009.4

© William Clutz



Tier 2 - William Clutz

Autumn Street, 1999

Oil on canvas, 50 x 40 in.

National Academy of Design, New York, 2006.11

© William Clutz



Tier 2 - Louisa Matthíasdóttir

Self-Portrait in Overalls, ca. 1985

Oil on canvas, 68 x 38 in.

National Academy of Design, New York, 1987.36

© Estate of Louisa Matthíasdóttir

Adopted

Tier 3 - Altoon Sultan

Tractor and Disc Harrow, Pawlett, Vermont, 1987

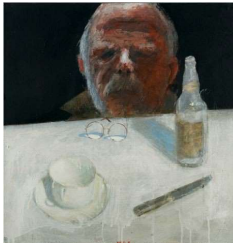
Oil on canvas, 22 x 48 in.

National Academy of Design, New York, 1995.22

© Altoon Sultan



Presentation at the Figge Supported by
Karen A. Cathelyn, Geneseo, IL



Tier 3 - W. Lee Savage
Self-Portrait with Cup and Narragansett Beer, 1988
 Acrylic on board, 25 x 25 x 1 1/2 in.
 National Academy of Design, New York, 1992.43
 © Estate of W. Lee Savage



Tier 3 - W. Lee Savage
Endangered Bobby, 1992
 Acrylic and mixed media on canvas, 54 x 54 in.
 National Academy of Design, New York, 1993.24
 © Estate of W. Lee Savage



Tier 3 - James McGarrell
Bison Self-Portrait, 1987
 Acrylic on canvas, 80 x 52 in.
 National Academy of Design, New York, 1993.34
 © Estate of James McGarrell



Tier 2 - Kay WalkingStick
Volute et Volupté, 2009
 Oil on panel, 36 x 72 in.
 National Academy of Design, New York, 2019.6



Tier 3 - Reuben Tam
Monhegan Landform, 1974
 Oil on canvas, 36 x 30 in.
 National Academy of Design, New York, 1986.214
 © Estate of Reuben Tam



Tier 3 - Reuben Tam
Monhegan Night, 1956
 Oil on canvas, 34 x 46 in.
 National Academy of Design, New York, Gift of the artist's estate, 1991, 1991.51
 © Estate of Reuben Tam



Tier 3 - Hank Willis Thomas
Jordan and Johnnie Walker, 2006
 Inkjet print on canvas, 18 x 14 in.
 National Academy of Design, New York
 Courtesy the artist and Jack Shainman Gallery



Tier 2 - David Kapp
Coming out of the Subway, 1998
 Oil on linen, 50 1/4 x 50 1/4 in.
 National Academy of Design, New York, Gift of anonymous donor, 2005, 2005.4
 © David Kapp



Tier 2 - Jacqueline Gourevitch
Night: WTC Looking East, 2000-2001
 Oil on canvas, 50 3/8 x 40 1/4 x 1 3/4 in.
 National Academy of Design, New York, 2012.12
 © Jacqueline Gourevitch



Tier 3 - David Diao
Bruce and Me, 2000
 Acrylic and silkscreen on canvas, 24 1/4 x 42 1/4 x 2 in.
 National Academy of Design, New York, 2013.3
 © David Diao



Tier 2 - Walter Hatke
Provider, 2001
 Oil on linen, 24 x 29 3/4 in.
 National Academy of Design, New York, 2012.71
 © Walter Hatke



Adopted
Tier 3 - Albert Kresch
North of Taos, N.M., 2005
 Oil on canvas, 14 1/2 x 46 1/2 in.
 National Academy of Design, New York, 2007.7
 © Albert Kresch

Presentation at the Figge Supported by
 John R. and Michele Martin



Tier 3 - Ann Gale

Babs with Ribbons, 2007

Oil on canvas, 48 x 42 in.

National Academy of Design, New York, 2014.3

© Ann Gale, Image courtesy of the Artist, Dolby Chadwick Gallery



Tier 2 - Jaune Quick-to-See Smith

Snake Dance, 2011

Oil, collage, and mixed media on canvas, 72 1/8 x 48 x 1 5/8 in.

National Academy of Design, New York, 2012.79

© Jaune Quick-to-See Smith, Image courtesy

Garth Greenan Gallery, New York



Tier 2 - Peter Saul

Self-Portrait, 2013

Acrylic on canvas, 60 1/4 x 55 1/4 x 1 7/8 in.

National Academy of Design, New York, 2013.10

© Peter Saul